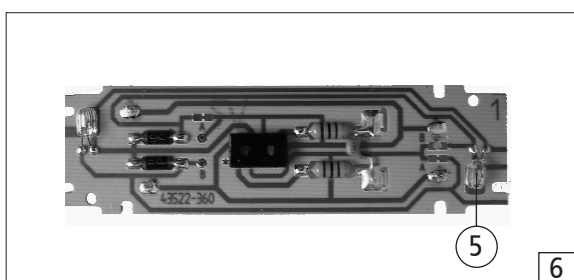
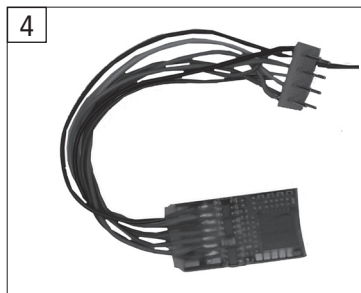
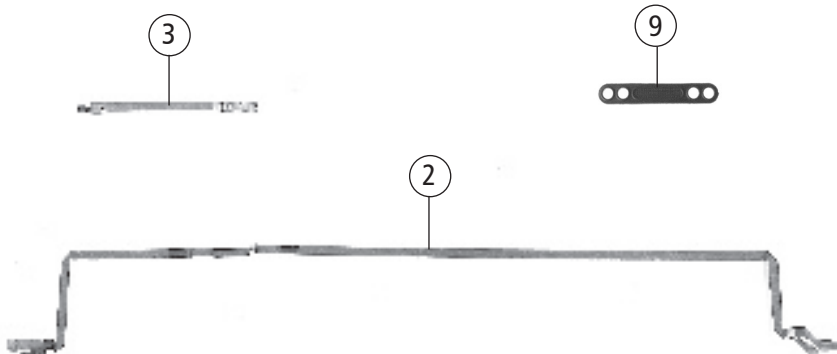
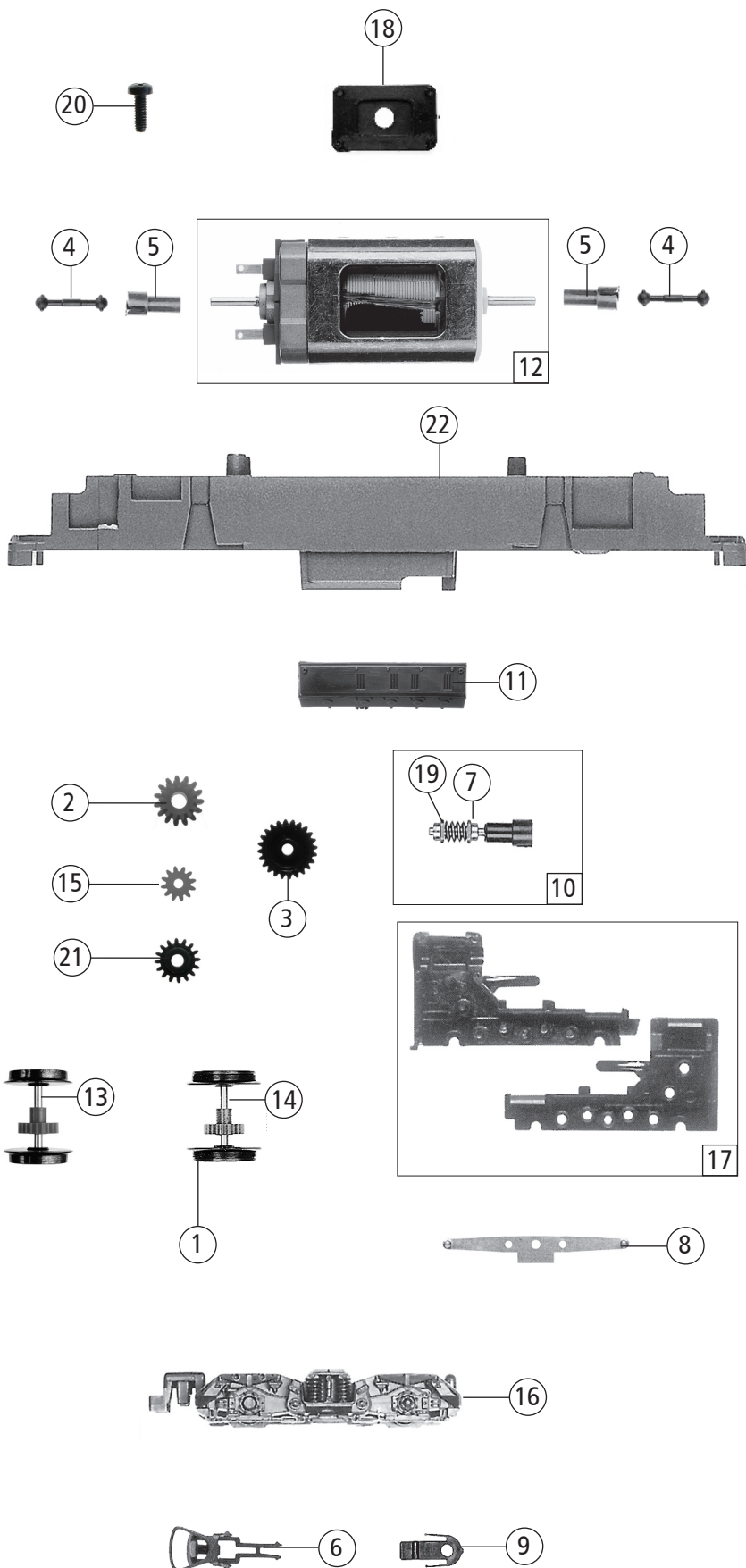


51312		DB-AG	BR 218	=	
Pos. Nr. Pos. no.	Beschreibung Description	Art.-Nr. Art. no.	Preisgruppe Price bracket		
1	Puffer Buffer	88654	3		
2	Lichtleitstab unten Lower light conductor	91406	7		
3	Lichtleitstab oben Upper light conductor	91407	5		
4	Decoder 8-polig Decoder 8-pin	10894	---		
5	Drahtlampe 16 V Bulb with leads 16 V	109321	8		
6	Platine komplett Printed circuit board assembly	111741	21		
7	Fenstersatz Window set	116673	7		
8	Gehäuse komplett Betr. Nr. 218 208-7 Body assembly loco. no. 218 208-7	143042	29		
9	Lichtblende Light cover	91405	8		



Änderungen in Konstruktion und Ausführung vorbehalten
We reserve the right to change the construction and specification



Pos. Nr. Pos. no.	Beschreibung Description	Art.-Nr. Art. no.	Preisgruppe Price bracket
1	Hafringsatz Traction tyre set	40069	---
2	Zahnrad Z=15/14 Gear wheel Z=15/14	86490	5
3	Zahnrad Z=24 Gear wheel Z=24	86520	3
4	Kardanwelle Cardan shaft	87099	4
5	Kardanschale lang Cardan reception, long	87100	4
6	Standardkupplung kpl. Standard coupling ass.	89246	6
7	Schneckenachslager Bearing for worm gear axle	89749	6
8	Radkontakt Wheel contact	89943	3
9	Kupplungskammer Coupling reception	100829	3
10	Schneckensatz Set of worm gear	105073	13
11	Werkzeugkasten Tool box	106993	4
12	Motor Motor	112137	28
13	Radsatz Wheelset	112462	11
14	Radsatz mit 2 Hafringen Wheelset with 2 traction tyres	112463	12
15	Zahnrad Z=12 Gear wheel Z=12	112464	3
16	Blende Bogie frame	112460	12
17	Getriebesatz Gear set	112461	12
18	Distanzplättchen Spacer chip	113017	4
19	Anlaufscheibe 4x2.1x0.01 Washer	114622	3
20	GF-Schraube M2x6 Self-tapping screw M2x6	114828	3
21	Zahnrad Z=16 Gear wheel Z=16	117617	3
22	Grundrahmen Basic frame	120507	16